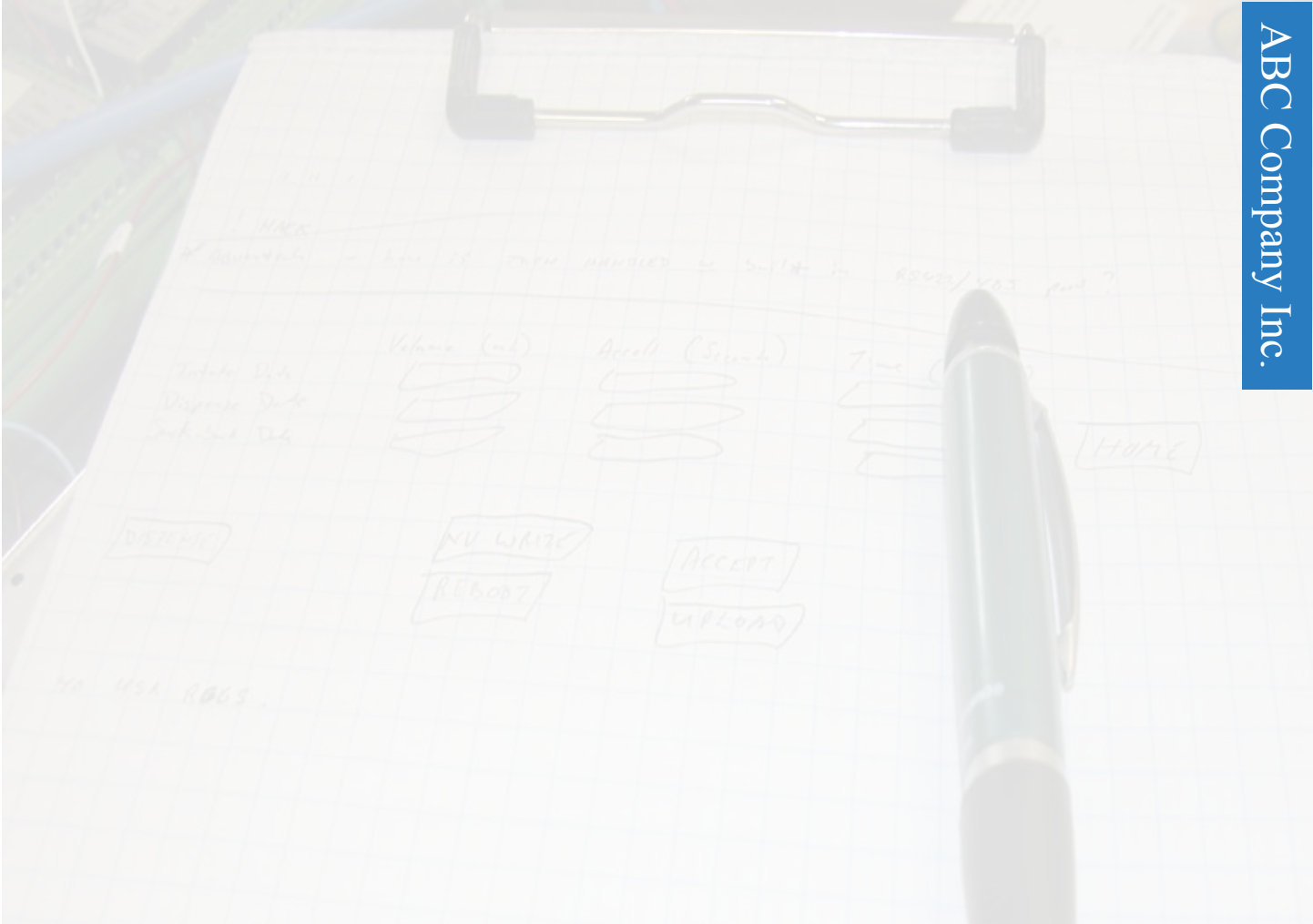
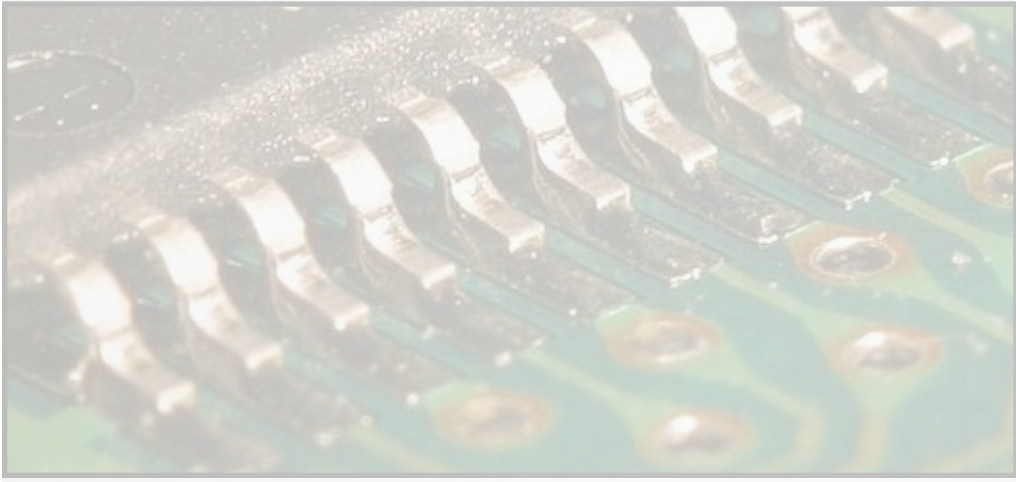


# White Paper Sample: 222-A999: New Product Info

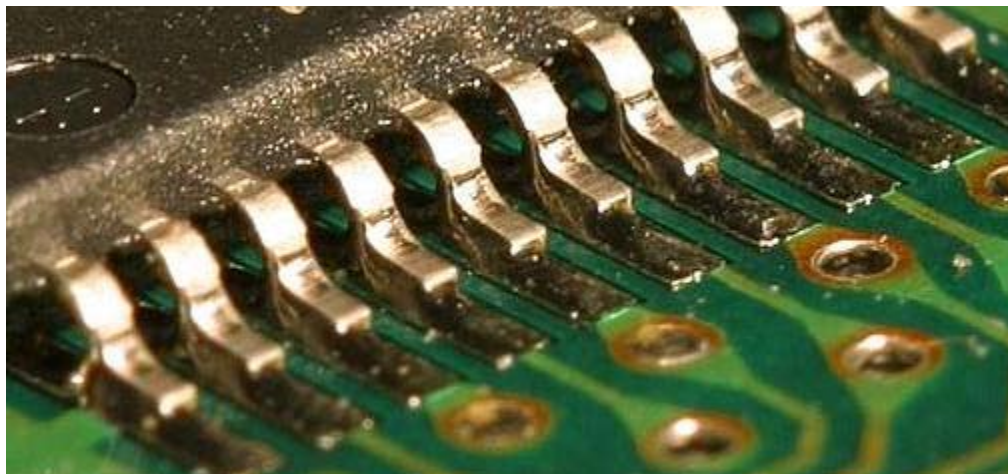
ABC Company Inc.



## 222-A999: Pin Number Changes



Product changes for IC xxx-001 results in new pin assignments as shown in the tables below:  
**Consult one of our representatives prior to making any changes!**



**Note:**

Refer to spec sheets for pin numbering scheme!

IC Models listed here are the only ones requiring changes for our boards:

- D55-444
- SN2-777
- B33-221

**New Pin Assignments: MZ-55N Series**

IC Model #	Number of Pins	Original Pin #	New Pin #
MZ-55N-33	6	1,2,3,4,5,6	2,4,6,1,3,5
MZ-55N-34	8	1,2,3,4,5,6,7,8	2,4,6,,8,1,3,5,7
MZ-55N-35	8	1,2,3,4,5,6,7,8	2,4,6,,8,1,3,5,7
MZ-55N-36	12	1,2,3,4,5,6,7,8,9,10,11,12	2,4,6,,8,10,12,1,3,5,7,9,11
MZ-55N-37	10	1,2,3,4,5,6,7,8,9,10	2,4,6,,8,10,1,3,5,7,9
MZ-55N-38	8	1,2,3,4,5,6,7,8	2,4,6,,8,1,3,5,7
MZ-55N-39	8	1,2,3,4,5,6,7,8	2,4,6,,8,1,3,5,7

**New Pin Assignments: AZ-55N Series**

IC Model #	Number of Pins	Original Pin #	New Pin #
AZ-55N-33	6	1,2,3,4,5,6	2,4,6,1,3,5
AZ-55N-34	8	1,2,3,4,5,6,7,8	2,4,6,,8,1,3,5,7
AZ-55N-35	8	1,2,3,4,5,6,7,8	2,4,6,,8,1,3,5,7
AZ-55N-36	12	1,2,3,4,5,6,7,8,9,10,11,12	2,4,6,,8,10,12,1,3,5,7,9,11
AZ-55N-37	10	1,2,3,4,5,6,7,8,9,10	2,4,6,,8,10,1,3,5,7,9
AZ-55N-38	8	1,2,3,4,5,6,7,8	2,4,6,,8,1,3,5,7
AZ-55N-39	8	1,2,3,4,5,6,7,8	2,4,6,,8,1,3,5,7

New Pin Assignments: BZ-55N Series			
IC Model #	Number of Pins	Original Pin #	New Pin #
BZ-55N-33	6	1,2,3,4,5,6	2,4,6,1,3,5
BZ-55N-34	8	1,2,3,4,5,6,7,8	2,4,6,,8,1,3,5,7
BZ-55N-35	8	1,2,3,4,5,6,7,8	2,4,6,,8,1,3,5,7
BZ-55N-36	12	1,2,3,4,5,6,7,8,9,10,11,12	2,4,6,,8,10,12,1,3,5,7,9,11
BZ-55N-37	10	1,2,3,4,5,6,7,8,9,10	2,4,6,,8,10,1,3,5,7,9
BZ-55N-38	8	1,2,3,4,5,6,7,8	2,4,6,,8,1,3,5,7
BZ-55N-39	8	1,2,3,4,5,6,7,8	2,4,6,,8,1,3,5,7

New Pin Assignments: VZ-55N Series			
IC Model #	Number of Pins	Original Pin #	New Pin #
VZ-55N-33	6	1,2,3,4,5,6	2,4,6,1,3,5
VZ-55N-34	8	1,2,3,4,5,6,7,8	2,4,6,,8,1,3,5,7
VZ-55N-35	8	1,2,3,4,5,6,7,8	2,4,6,,8,1,3,5,7
VZ-55N-36	12	1,2,3,4,5,6,7,8,9,10,11,12	2,4,6,,8,10,12,1,3,5,7,9,11
VZ-55N-37	10	1,2,3,4,5,6,7,8,9,10	2,4,6,,8,10,1,3,5,7,9
VZ-55N-38	8	1,2,3,4,5,6,7,8	2,4,6,,8,1,3,5,7
VZ-55N-39	8	1,2,3,4,5,6,7,8	2,4,6,,8,1,3,5,7

New Pin Assignments: LZ-55N Series			
IC Model #	Number of Pins	Original Pin #	New Pin #
LZ-55N-33	6	1,2,3,4,5,6	2,4,6,1,3,5
LZ-55N-34	8	1,2,3,4,5,6,7,8	2,4,6,,8,1,3,5,7
LZ-55N-35	8	1,2,3,4,5,6,7,8	2,4,6,,8,1,3,5,7
LZ-55N-36	12	1,2,3,4,5,6,7,8,9,10,11,12	2,4,6,,8,10,12,1,3,5,7,9,11
LZ-55N-37	10	1,2,3,4,5,6,7,8,9,10	2,4,6,,8,10,1,3,5,7,9
LZ-55N-38	8	1,2,3,4,5,6,7,8	2,4,6,,8,1,3,5,7
LZ-55N-39	8	1,2,3,4,5,6,7,8	2,4,6,,8,1,3,5,7